

A woman with short brown hair, wearing dark sunglasses, a light pink short-sleeved top with a subtle pattern, and dark blue trousers, is talking on a white smartphone. She is standing in front of a modern, multi-story glass and steel building. The scene is captured from a low angle, looking up at the woman and the building. The sky is clear and blue.

Utiolò<sup>HR</sup>

*EXECUTIVE*

*- SPRING SUMMER 2020 -*





*BLUSA RAYAS*

Art: 7187

Talle: S - XL

Color: Blanco,  
Crudo



*BLUSA LISA*

Art: 6598

Talle: S - XL

Color: Crudo,  
Negro, Roja







*CHAQUETA  
CONJUNTO*

Art: 6884  
Talle: 36 - 50  
Color: Azul,  
Fresa



*PANTALÓN*

*SASTRE*

Art: 6881

Talle: 36 - 50

Color: Rojo,  
Fresa, Azul,  
Negro,





*BLUSA PUNTOS*

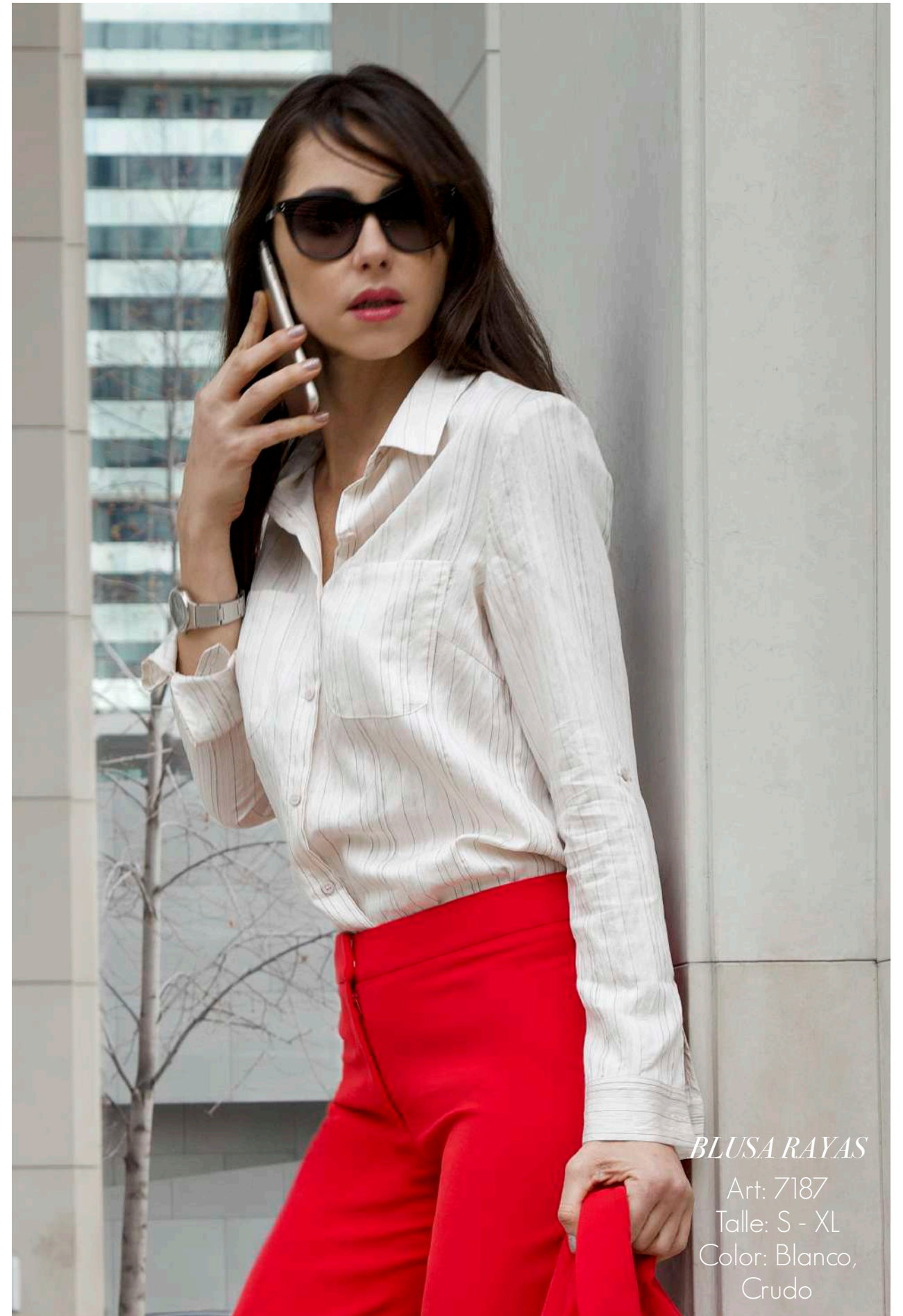
Art: 7186

Talle: S - XL

Color: Azul,

Crudo, Rosado





*BLUSA RAYAS*

Art: 7187

Talle: S - XL

Color: Blanco,  
Crudo





*CHAQUETA  
CONJUNTO*

Art: 6884  
Talle: 36 - 50  
Color: Azul,  
Fresa





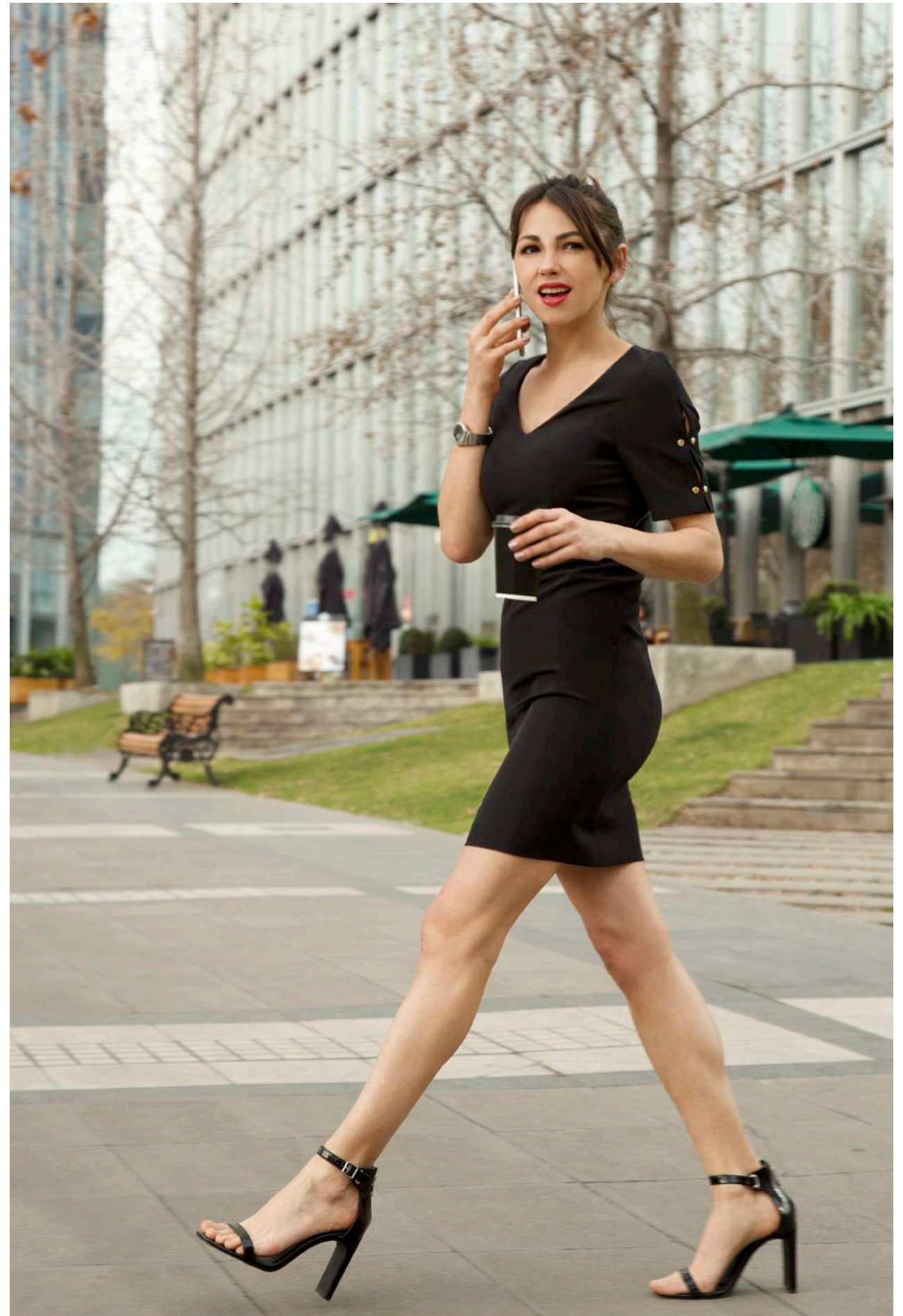
*PANTALÓN  
CLÁSICO*

Art: 6881  
Talle: 36 - 50  
Color: Rojo,  
Fresa, Azul,  
Negro,

*PANTALÓN  
+ BLUSA*

Art: 6886  
36 - 50  
Rojo, Fresa  
Azul









*VESTIDO*  
Art: 6902  
Talle: 36 - 50  
Color: Rojo,  
Fresa, Azul,  
Negro,





# UioLo

*EXECUTIVE*

*- SPRING SUMMER 2020 -*